

EXHIBIT 5

BILL OF SALE ABSOLUTE

KNOW ALL MEN BY THESE PRESENTS, That The School Board of Broward County, Florida, Party of the first part, for and in consideration of the sum of Ten Dollars, lawful money of the United States, to be paid by the CITY OF PEMBROKE PINES, a municipal corporation of the State of Florida, 10100 Pines Boulevard, Pembroke Pines, Florida, Party of the second part, the receipt whereof is hereby acknowledged, has granted, bargained, sold, transferred and delivered and by these presents does grant, bargain, sell, transfer and deliver unto the said Party of the second part, its successors and assigns, the following goods and chattels:

All of the PAVING/DRAINAGE Improvements; together with all appurtenances attached thereto, which lie within the SW 202nd Avenue Right-of Way in Parcel "A" of West Broward Industrial Park North, or within easements provided for same.

All of the above further described in plans titled "West Broward Industrial Park North – Asbuilt Paving, Grading & Drainage Plans," by Carnahan-Proctor-Cross, Inc., which are attached hereto as Exhibit "A" and quantities and cost breakdown which is attached hereto as Exhibit "B".

TO HAVE AND TO HOLD the same unto the said Party of the second part, its successors and assigns forever.

The Party of the First part does covenant to and with the Party of the second part, its successors and assigns, that it is the lawful owner of the said goods and chattels; that they are free from all encumbrances; that it has good right to sell the same aforesaid, and that it will warrant and defend the sale of the said property, goods and chattels hereby made, unto the said Party of the second Party's successors and assigns against the lawful claims and demands of all persons whomsoever.

IN WITNESS WHEREOF, Grantor has hereunto set his hand and seal on the day and year first above written.

Signed, sealed and delivered
in our presence:

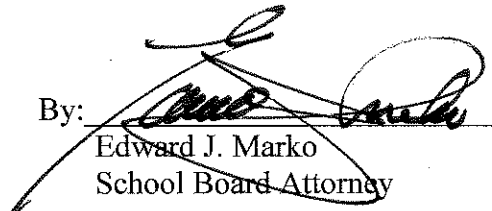
**THE SCHOOL BOARD OF BROWARD
COUNTY, FLORIDA**

By: _____
Robin Bartleman, Chair

ATTEST:

Approved as to form and legal content:

James F. Notter
Superintendent of Schools

By: 
Edward J. Marko
School Board Attorney

STATE OF FLORIDA

COUNTY OF _____:

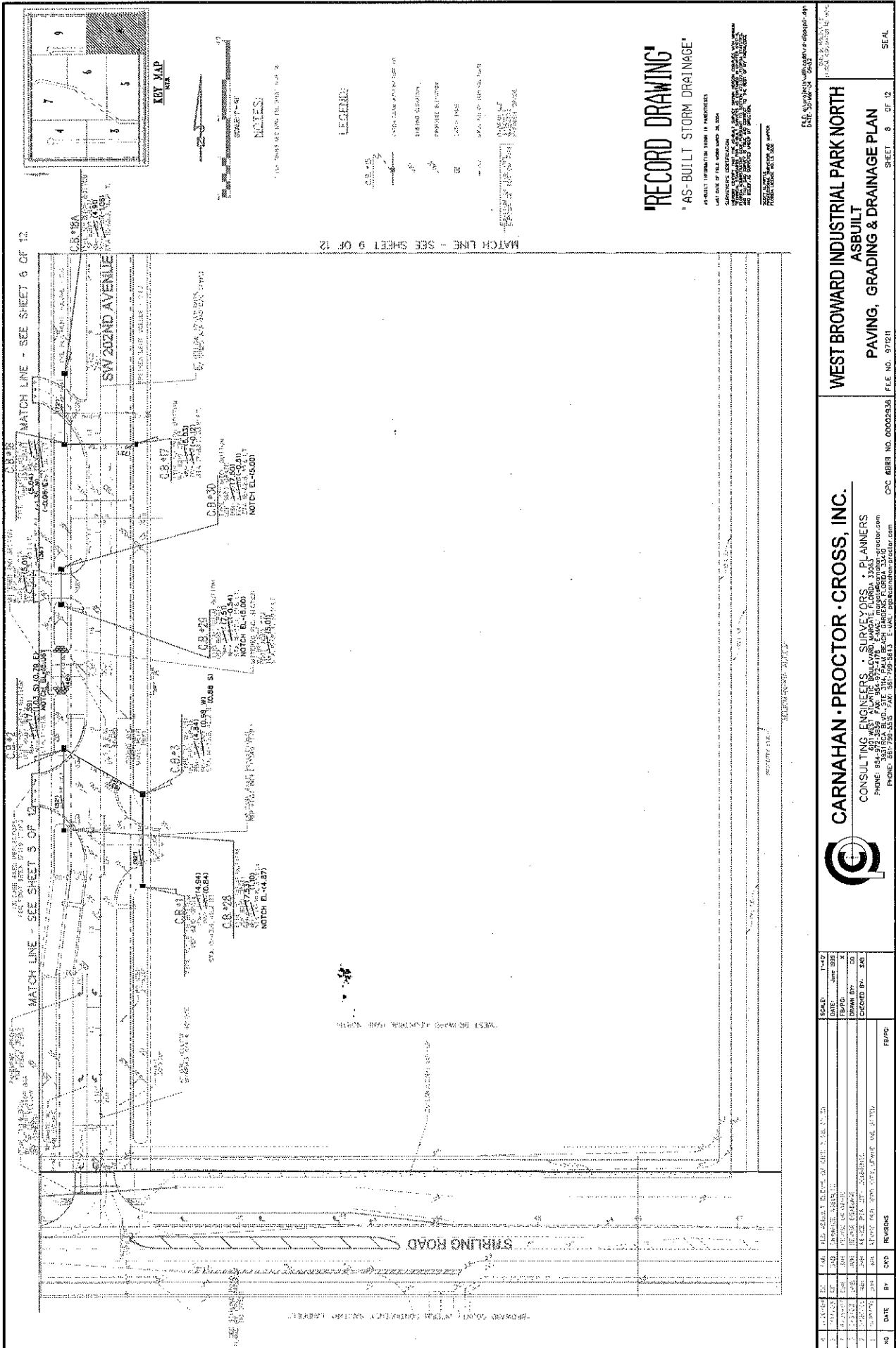
I HEREBY CERTIFY that on this day, before me, an Officer duly authorized in the State aforesaid and in the County aforesaid to take acknowledgments, personally appeared _____ to me known to be the person(s) described in and who executed the foregoing instrument and _____ acknowledged before me and under oath that _____ executed the same.

WITNESS my hand and official seal this _____ day of _____, 2008.

NOTARY PUBLIC

My Commission Expires:

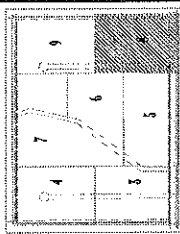
Ex "A"



MATCH LINE - SEE SHEET 6 OF 12

MATCH LINE - SEE SHEET 3 OF 12

MATCH LINE - SEE SHEET 9 OF 12



KEY MAP



NOTES:

LEGEND:

- 1. 1/4" = 100' (SEE SHEET 10 OF 12)
- 2. 1/4" = 100' (SEE SHEET 11 OF 12)
- 3. 1/4" = 100' (SEE SHEET 12 OF 12)
- 4. 1/4" = 100' (SEE SHEET 13 OF 12)
- 5. 1/4" = 100' (SEE SHEET 14 OF 12)
- 6. 1/4" = 100' (SEE SHEET 15 OF 12)
- 7. 1/4" = 100' (SEE SHEET 16 OF 12)
- 8. 1/4" = 100' (SEE SHEET 17 OF 12)
- 9. 1/4" = 100' (SEE SHEET 18 OF 12)
- 10. 1/4" = 100' (SEE SHEET 19 OF 12)
- 11. 1/4" = 100' (SEE SHEET 20 OF 12)
- 12. 1/4" = 100' (SEE SHEET 21 OF 12)
- 13. 1/4" = 100' (SEE SHEET 22 OF 12)
- 14. 1/4" = 100' (SEE SHEET 23 OF 12)
- 15. 1/4" = 100' (SEE SHEET 24 OF 12)
- 16. 1/4" = 100' (SEE SHEET 25 OF 12)
- 17. 1/4" = 100' (SEE SHEET 26 OF 12)
- 18. 1/4" = 100' (SEE SHEET 27 OF 12)
- 19. 1/4" = 100' (SEE SHEET 28 OF 12)
- 20. 1/4" = 100' (SEE SHEET 29 OF 12)
- 21. 1/4" = 100' (SEE SHEET 30 OF 12)
- 22. 1/4" = 100' (SEE SHEET 31 OF 12)
- 23. 1/4" = 100' (SEE SHEET 32 OF 12)
- 24. 1/4" = 100' (SEE SHEET 33 OF 12)
- 25. 1/4" = 100' (SEE SHEET 34 OF 12)
- 26. 1/4" = 100' (SEE SHEET 35 OF 12)
- 27. 1/4" = 100' (SEE SHEET 36 OF 12)
- 28. 1/4" = 100' (SEE SHEET 37 OF 12)
- 29. 1/4" = 100' (SEE SHEET 38 OF 12)
- 30. 1/4" = 100' (SEE SHEET 39 OF 12)
- 31. 1/4" = 100' (SEE SHEET 40 OF 12)
- 32. 1/4" = 100' (SEE SHEET 41 OF 12)
- 33. 1/4" = 100' (SEE SHEET 42 OF 12)
- 34. 1/4" = 100' (SEE SHEET 43 OF 12)
- 35. 1/4" = 100' (SEE SHEET 44 OF 12)
- 36. 1/4" = 100' (SEE SHEET 45 OF 12)
- 37. 1/4" = 100' (SEE SHEET 46 OF 12)
- 38. 1/4" = 100' (SEE SHEET 47 OF 12)
- 39. 1/4" = 100' (SEE SHEET 48 OF 12)
- 40. 1/4" = 100' (SEE SHEET 49 OF 12)
- 41. 1/4" = 100' (SEE SHEET 50 OF 12)
- 42. 1/4" = 100' (SEE SHEET 51 OF 12)
- 43. 1/4" = 100' (SEE SHEET 52 OF 12)
- 44. 1/4" = 100' (SEE SHEET 53 OF 12)
- 45. 1/4" = 100' (SEE SHEET 54 OF 12)
- 46. 1/4" = 100' (SEE SHEET 55 OF 12)
- 47. 1/4" = 100' (SEE SHEET 56 OF 12)
- 48. 1/4" = 100' (SEE SHEET 57 OF 12)
- 49. 1/4" = 100' (SEE SHEET 58 OF 12)
- 50. 1/4" = 100' (SEE SHEET 59 OF 12)
- 51. 1/4" = 100' (SEE SHEET 60 OF 12)
- 52. 1/4" = 100' (SEE SHEET 61 OF 12)
- 53. 1/4" = 100' (SEE SHEET 62 OF 12)
- 54. 1/4" = 100' (SEE SHEET 63 OF 12)
- 55. 1/4" = 100' (SEE SHEET 64 OF 12)
- 56. 1/4" = 100' (SEE SHEET 65 OF 12)
- 57. 1/4" = 100' (SEE SHEET 66 OF 12)
- 58. 1/4" = 100' (SEE SHEET 67 OF 12)
- 59. 1/4" = 100' (SEE SHEET 68 OF 12)
- 60. 1/4" = 100' (SEE SHEET 69 OF 12)
- 61. 1/4" = 100' (SEE SHEET 70 OF 12)
- 62. 1/4" = 100' (SEE SHEET 71 OF 12)
- 63. 1/4" = 100' (SEE SHEET 72 OF 12)
- 64. 1/4" = 100' (SEE SHEET 73 OF 12)
- 65. 1/4" = 100' (SEE SHEET 74 OF 12)
- 66. 1/4" = 100' (SEE SHEET 75 OF 12)
- 67. 1/4" = 100' (SEE SHEET 76 OF 12)
- 68. 1/4" = 100' (SEE SHEET 77 OF 12)
- 69. 1/4" = 100' (SEE SHEET 78 OF 12)
- 70. 1/4" = 100' (SEE SHEET 79 OF 12)
- 71. 1/4" = 100' (SEE SHEET 80 OF 12)
- 72. 1/4" = 100' (SEE SHEET 81 OF 12)
- 73. 1/4" = 100' (SEE SHEET 82 OF 12)
- 74. 1/4" = 100' (SEE SHEET 83 OF 12)
- 75. 1/4" = 100' (SEE SHEET 84 OF 12)
- 76. 1/4" = 100' (SEE SHEET 85 OF 12)
- 77. 1/4" = 100' (SEE SHEET 86 OF 12)
- 78. 1/4" = 100' (SEE SHEET 87 OF 12)
- 79. 1/4" = 100' (SEE SHEET 88 OF 12)
- 80. 1/4" = 100' (SEE SHEET 89 OF 12)
- 81. 1/4" = 100' (SEE SHEET 90 OF 12)
- 82. 1/4" = 100' (SEE SHEET 91 OF 12)
- 83. 1/4" = 100' (SEE SHEET 92 OF 12)
- 84. 1/4" = 100' (SEE SHEET 93 OF 12)
- 85. 1/4" = 100' (SEE SHEET 94 OF 12)
- 86. 1/4" = 100' (SEE SHEET 95 OF 12)
- 87. 1/4" = 100' (SEE SHEET 96 OF 12)
- 88. 1/4" = 100' (SEE SHEET 97 OF 12)
- 89. 1/4" = 100' (SEE SHEET 98 OF 12)
- 90. 1/4" = 100' (SEE SHEET 99 OF 12)
- 91. 1/4" = 100' (SEE SHEET 100 OF 12)

RECORD DRAWING
AS-BUILT STORM DRAINAGE

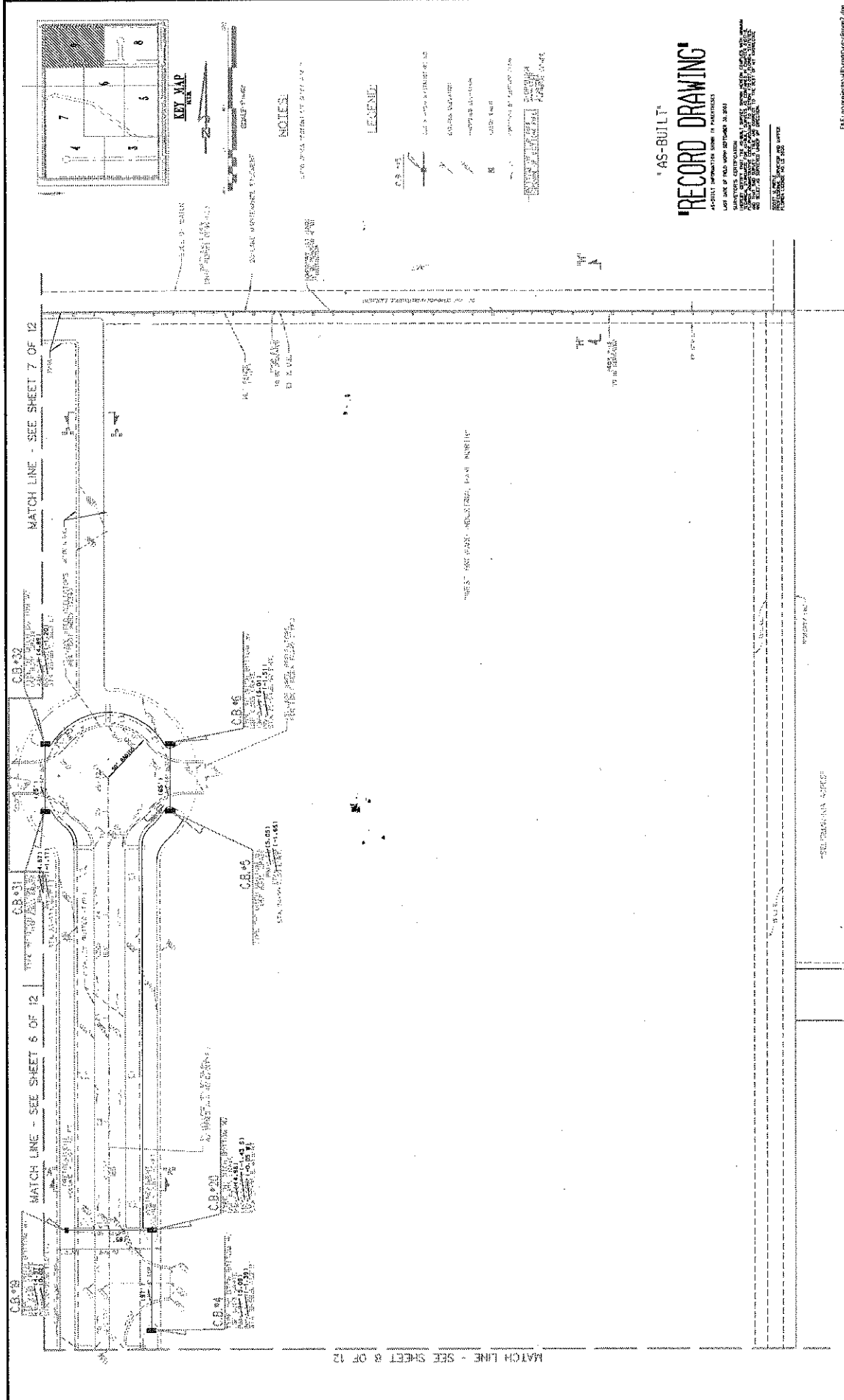
FOR THE INFORMATION OF THE USER, THIS DRAWING IS A RECORD DRAWING AND IS NOT TO BE USED FOR CONSTRUCTION. THE USER SHALL BE RESPONSIBLE FOR VERIFYING THE ACCURACY OF THE INFORMATION SHOWN ON THIS DRAWING. THE USER SHALL BE RESPONSIBLE FOR OBTAINING ALL NECESSARY PERMITS AND APPROVALS FROM THE APPROPRIATE AGENCIES. THE USER SHALL BE RESPONSIBLE FOR OBTAINING ALL NECESSARY INFORMATION FROM THE RECORD DRAWING. THE USER SHALL BE RESPONSIBLE FOR OBTAINING ALL NECESSARY INFORMATION FROM THE RECORD DRAWING. THE USER SHALL BE RESPONSIBLE FOR OBTAINING ALL NECESSARY INFORMATION FROM THE RECORD DRAWING.

CARNAHAN • PROCTOR • CROSS, INC.
 CONSULTING ENGINEERS • SURVEYORS • PLANNERS
 PHONE: 954-972-8839 FAX: 954-972-8838
 3811 W. 79th Ave., Suite 301, Fort Lauderdale, FL 33309
 WWW.CPCRECORDS.COM

| NO. | DATE | BY | CHKD | REV | REVISIONS |
|-----|----------|-----|------|-----|--------------------------|
| 1 | 01/15/10 | JMS | JMS | | ISSUE FOR PERMITTING |
| 2 | 01/15/10 | JMS | JMS | | ISSUE FOR CONSTRUCTION |
| 3 | 01/15/10 | JMS | JMS | | ISSUE FOR RECORDING |
| 4 | 01/15/10 | JMS | JMS | | ISSUE FOR AS-BUILT |
| 5 | 01/15/10 | JMS | JMS | | ISSUE FOR RECORD DRAWING |

| SCALE | DATE | BY | CHKD |
|-------------|----------|-----|------|
| 1/4" = 100' | 01/15/10 | JMS | JMS |
| 1/4" = 100' | 01/15/10 | JMS | JMS |
| 1/4" = 100' | 01/15/10 | JMS | JMS |
| 1/4" = 100' | 01/15/10 | JMS | JMS |

WEST BROWARD INDUSTRIAL PARK NORTH
 AS-BUILT
 PAVING, GRADING & DRAINAGE PLAN
 SHEET 8 OF 12
 FILE NO. 97211
 SEAL



AS-BUILT
RECORD DRAWING
 ALL DIMENSIONS UNLESS OTHERWISE SPECIFIED
 SHALL BE IN FEET AND INCHES
 FRACTIONS SHALL BE IN 16THS OF AN INCH
 ALL CORNERS UNLESS OTHERWISE SPECIFIED
 SHALL BE 90 DEGREES
 ALL DISTANCES UNLESS OTHERWISE SPECIFIED
 SHALL BE IN FEET AND INCHES
 FRACTIONS SHALL BE IN 16THS OF AN INCH
 ALL DIMENSIONS UNLESS OTHERWISE SPECIFIED
 SHALL BE IN FEET AND INCHES
 FRACTIONS SHALL BE IN 16THS OF AN INCH

WEST BROWARD INDUSTRIAL PARK NORTH
ASBUILT
PAVING, GRADING & DRAINAGE PLAN

CARNAHAN PROCTOR CROSS, INC.
 CONSULTING ENGINEERS SURVEYORS PLANNERS
 PHONE: 954-772-1555 FAX: 954-772-1176 E-MAIL: info@cpcross.com
 PHONE: 954-772-5557 FAX: 954-772-5433 E-MAIL: info@carproct.com

| NO. | DATE | BY | REVISED | REVISIONS |
|-----|----------|-----|---------|--------------------|
| 1 | 12-15-09 | DLK | 1 | ISSUED FOR PERMITS |
| 2 | 12-15-09 | DLK | 2 | ISSUED FOR PERMITS |
| 3 | 12-15-09 | DLK | 3 | ISSUED FOR PERMITS |
| 4 | 12-15-09 | DLK | 4 | ISSUED FOR PERMITS |
| 5 | 12-15-09 | DLK | 5 | ISSUED FOR PERMITS |
| 6 | 12-15-09 | DLK | 6 | ISSUED FOR PERMITS |
| 7 | 12-15-09 | DLK | 7 | ISSUED FOR PERMITS |
| 8 | 12-15-09 | DLK | 8 | ISSUED FOR PERMITS |
| 9 | 12-15-09 | DLK | 9 | ISSUED FOR PERMITS |
| 10 | 12-15-09 | DLK | 10 | ISSUED FOR PERMITS |

SCALE: 1"=40'
 DATE: June 2009
 DRAWN BY: KLS
 CHECKED BY: DML
 SHEET 9 OF 12
 FILE NO. 071211-S2
 CPC 6696 NO. 00002836
 WEST BROWARD INDUSTRIAL PARK NORTH
 PAVING, GRADING & DRAINAGE PLAN
 SHEET 9 OF 12
 SEAL

**CARNAHAN-PROCTOR-CROSS, INC.**

8101 West Atlantic Blvd., Margate, Florida 33063 * (954) 972-3959 * FAX (954) 972-4178

CPC Job No.:

971211-E

Prepared by:

J. E. Moore

Date:

30-May-08

Contractor:

Main Attraction

N.W. 202nd Ave. - North Broward Industrial Park

Pembroke Pines, Florida

Engineer's Cost Estimate

| DESCRIPTION | QUANTITY | UNITS | UNIT PRICE | BID PRICE | TOTAL |
|--|----------|-------|------------|-----------|---------------------|
| I. Paving, Curbs, Sidewalks, etc. | | | | | |
| 1-1/2" Type S-III Asphaltic Concrete | 5,661 | SY | \$4.00 | | \$22,644.00 |
| 8" Limerock Base | 5,944 | SY | \$3.58 | | \$21,279.52 |
| 12" Stabilized Subgrade | 6,453 | SY | \$3.50 | | \$22,585.50 |
| 2' Valley Gutter | 3,375 | LF | \$5.25 | | \$17,718.75 |
| 4" Rock Pad for Valley Gutter | 751 | | \$2.00 | | \$1,502.00 |
| Type "F" Curb and Gutter | 450 | LF | \$5.25 | | \$2,362.50 |
| Pavement Marking & Signage | 1 | LS | \$450.00 | | \$450.00 |
| Sodding (Shoulder) | 5,777 | SY | \$1.30 | | \$7,510.10 |
| SUBTOTAL | | | | | \$96,052.37 |
| II. Drainage | | | | | |
| 15" RCP | 72 | LF | \$32.00 | | \$2,304.00 |
| 18" RCP | 85 | LF | \$32.00 | | \$2,720.00 |
| 24" RCP | 267 | LF | \$40.00 | | \$10,680.00 |
| 36" RCP | 36 | LF | \$45.00 | | \$1,620.00 |
| 42" RCP | 72 | LF | \$75.00 | | \$5,400.00 |
| 48" RCP | 227 | LF | \$82.00 | | \$18,614.00 |
| 30"x19" RCP | 48 | LF | \$38.00 | | \$1,824.00 |
| Type "C" | 2 | LF | \$2,000.00 | | \$4,000.00 |
| Type "D" | 4 | EA | \$2,500.00 | | \$10,000.00 |
| Type "E" | 10 | EA | \$3,000.00 | | \$30,000.00 |
| SUBTOTAL | | | | | \$82,138.00 |
| SUMMARY | | | | | |
| Item I-Paving, Curbs, Sidewalk, etc. | | | | | \$96,052.37 |
| Item II-Drainage | | | | | \$82,138.00 |
| TOTAL | | | | | \$178,190.37 |

Prepared by: Gregory M. Proctor, P.E., Fl. Reg. 36866

Gregory M. Proctor, P.E.,
Florida Registration No. 36866

JUL 17 2008

EXHIBIT "B"